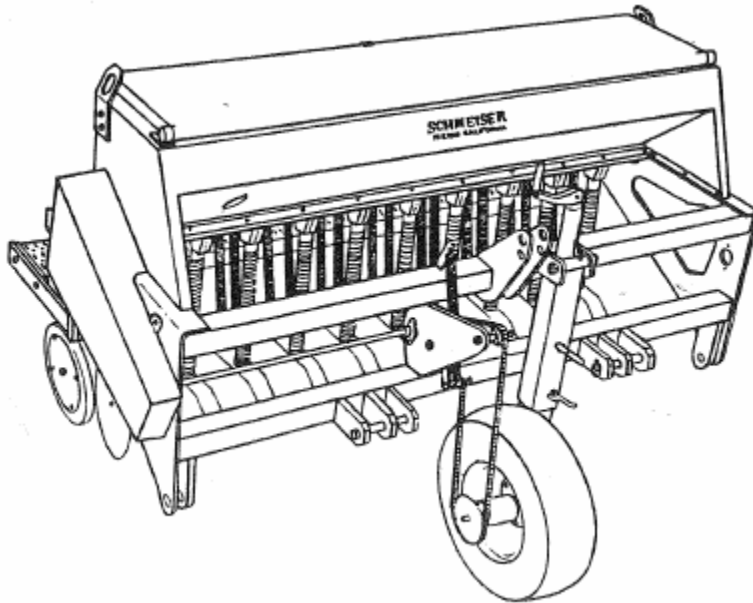


SCHMEISER VINEYARD DRILL

ASSEMBLY & PARTS MANUAL



T.G. SCHMEISER CO. INC.
P.O. BOX 1112 FRESNO, CA 93714-1112
(559) 268-8128 FAX (559) 268-3279

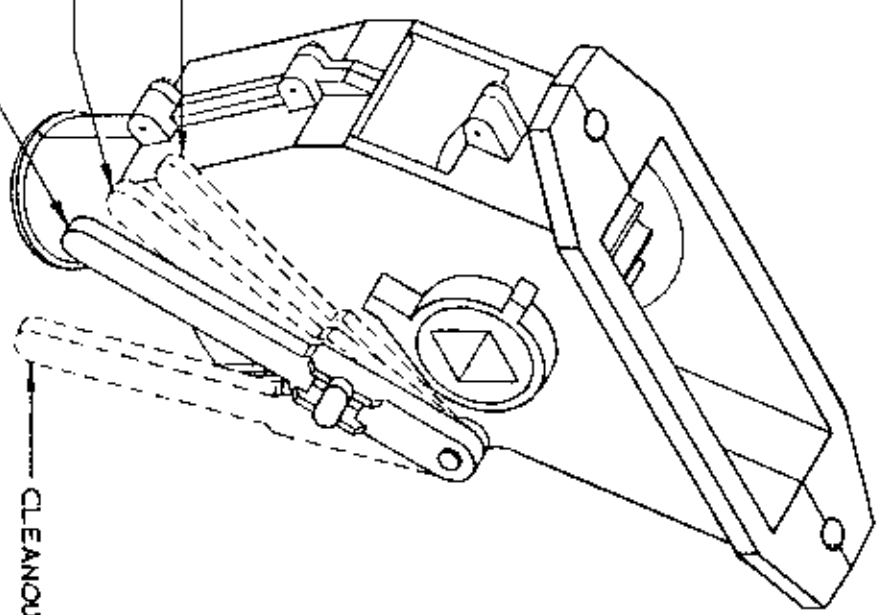
VERSION 1.0
8/92

SEEDING RATES FOR SCHMEISER VINEYARD GRILL/SEEDER
Rates in Pounds per Planted Acre

Seed	Seed Cup Calibration										Suggested Pounds/Acre
	10	20	30	40	50	60	70	80	90	100	
Pearl Millet	10	20	29	38	48	57	67	77	87	96	40-60#/acre
Winter Forage #1	6	11	24	31	39	48	56	63	70	78	100-125#/acre
Westerwald Annual Ryegrass	5	10	15	19	24	27	31	33	37	42	25-35#/acre
Blando Brome	0	1	1	1	1	1	2	2	2	2	6-18#/acre
Crimson/Berseem	11	22	32	42	53	64	75	81	91	101	20-30#/acre
Cahaba Vetch	13	26	36	48	60	77	90	100	112	125	40-100#/acre
Cahaba/Barley Mix	12	24	36	48	60	80	92	96	108	120	40-100#/acre
Germain's Cover Crop #1	9	19	33	44	55	86	100	94	105	117	70-100#/acre
Cover Crop #2	7	15	32	43	54	71	83	92	104	115	120-150#/acre
Cover Crop #3	9	17	38	51	63	89	104	108	122	135	120-150#/acre
Annual Clover Mix	15	30	37	40	62	72	84	87	98	109	30-35#/acre
Germain's Insectary Mix	9	18	26	35	44	52	60	64	72	80	15-25#/acre
Perennial Clover	11	21	30	40	50	58	66	62	70	77	20-30#/acre
Cover Mate	4	8	11	15	19	21	25	26	29	32	25-35#/acre
Chinese Red Cowpea	0	0	0	0	0	0	0	0	0	0	40-60#/acre
Common Vetch	9	17	26	35	44	60	70	79	89	99	50-80#/acre
Purple Vetch	12	25	40	53	66	82	96	97	109	121	50-80#/acre
Wooly Pod Vetch	12	24	30	52	65	90	105	103	115	128	40-80#/acre
Buckwheat	8	16	25	33	41	53	62	68	76	95	30-60#/acre
Sudan Grass Bravo	9	17	26	35	44	51	60	65	74	82	25-50#/acre
Merced Ryegrain	11	22	32	42	53	64	74	78	87	97	60-80#/acre
Winter Forage #2	6	11	24	31	39	48	56	63	70	78	

CAUTION: THESE RATES ARE APPROXIMATE ONLY. PLEASE VERIFY OUTPUT PRIOR TO FIELD USE.

SMALL SEED POSITION
MEDIUM SEED POSITION
LARGE SEED POSITION



CLEANOUT POSITION

VINEYARD DRILL

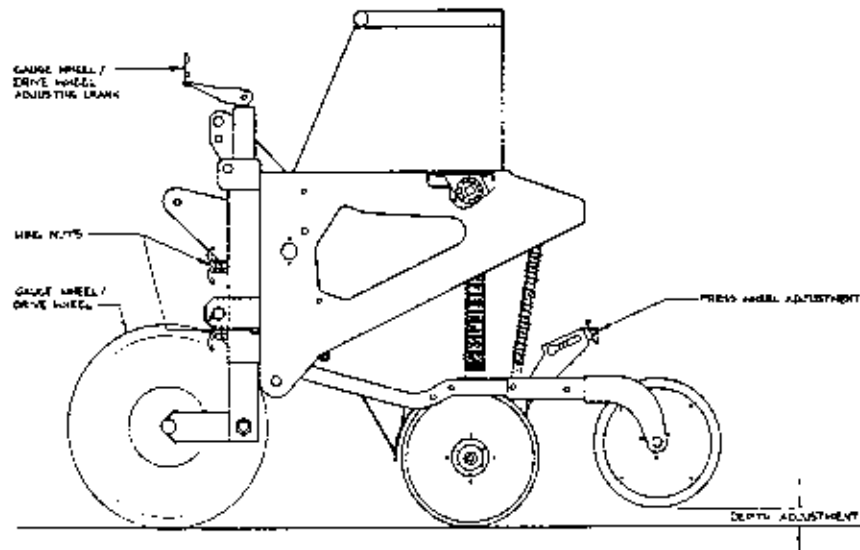
SCALE: HALF SIZE		APPROVED BY:	
DATE: 11/23/92		DRAWN BY: M. JACOBY	
SEED FEEDER CUP - ISOMETRIC		REVISED	
		DRAWING NUMBER	

PLANTING DEPTH ADJUSTMENTS

Your Schmeiser Vineyard drill is designed to run level to the ground when in planting position. Minor adjustments may be required to achieve the desired seed placement.

GAUGE WHEEL/DRIVE WHEEL ADJUSTMENTS

Gauge wheel/drive wheel adjustments are made in order to allow your openers to travel both up and down and follow the contour of the ground. In order to adjust your gauge wheel/drive wheel loosen the two wing nuts located on the adjusting crank housing. By lengthening the adjusting crank, the gauge wheel/drive wheel is lowered causing less opener spring rod extension through the spring rod casting. This in turn causes less downward float of your openers. By shortening the adjusting crank, the gauge wheel is raised causing more spring rod to protrude through the opener spring rod casting which in turn causes more downward float of your openers.



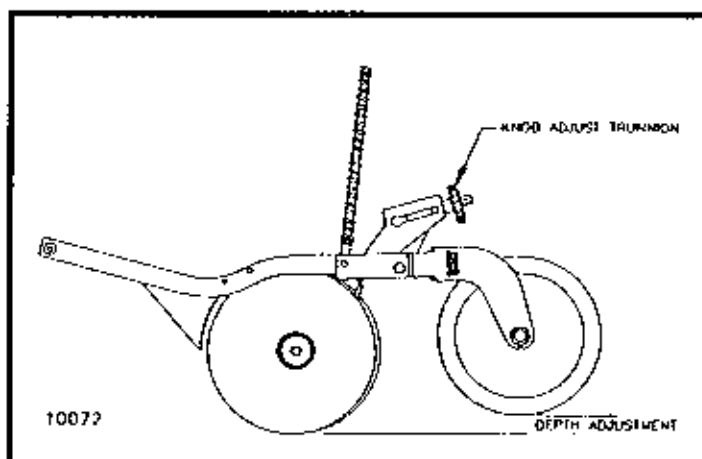
Check the spring rods cross bolts at the top of the spring rods to see that they are extended about 2" above their spring rod casting. This is a general dimension and may vary with spring rod down-pressure that you require for different soil conditions and planting depths. If you require more downward float on your openers, you may want to increase this dimension. Keep in mind that when this dimension is increase your upward motion is decreased, limiting the vertical travel of the openers for running over rocks and other foreign objects.

IMPORTANT: If your opener's vertical travel is decreased considerable damage will occur to your openers.

After adjusting the gauge wheel/gauge wheel, be certain to tighten up both wing nuts.

PRESSWHEEL - OPENER LINKAGE DEPTH ADJUSTMENT

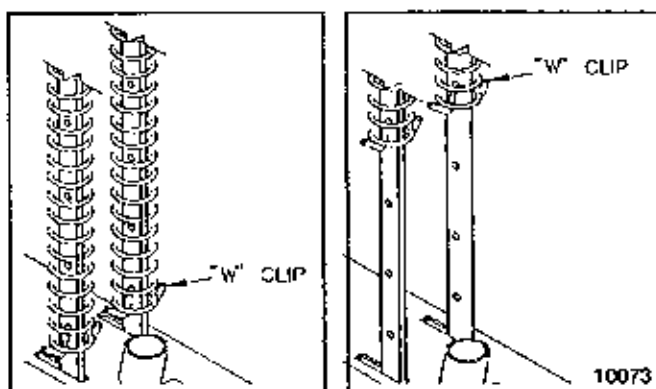
The depth of each opener is controlled by the height of the press wheel. For varying the height of the press wheel which automatically changes the seeding depth of the opener, simply rotate the knob located directly above each press wheel until the seeding depth is correct. A self-locking spring clip holds the knob at your setting to maintain the proper depth.



Direct Link Press Wheel Adjustment

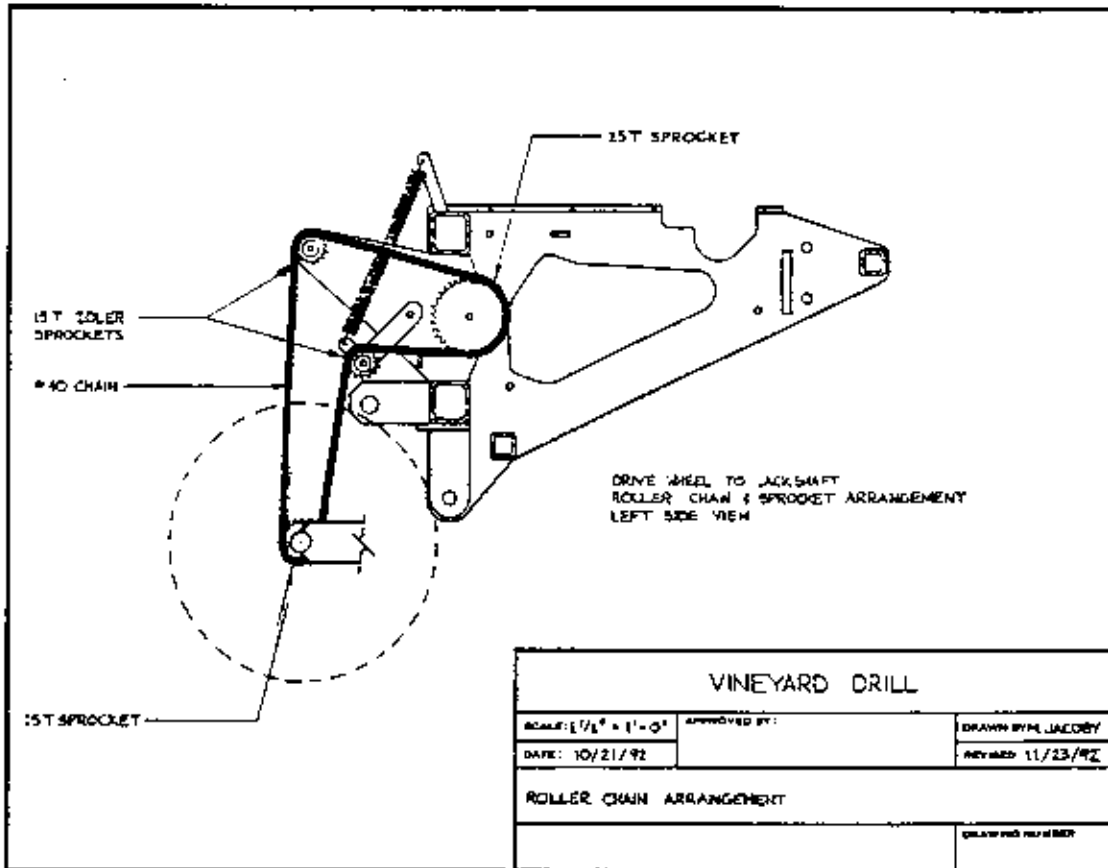
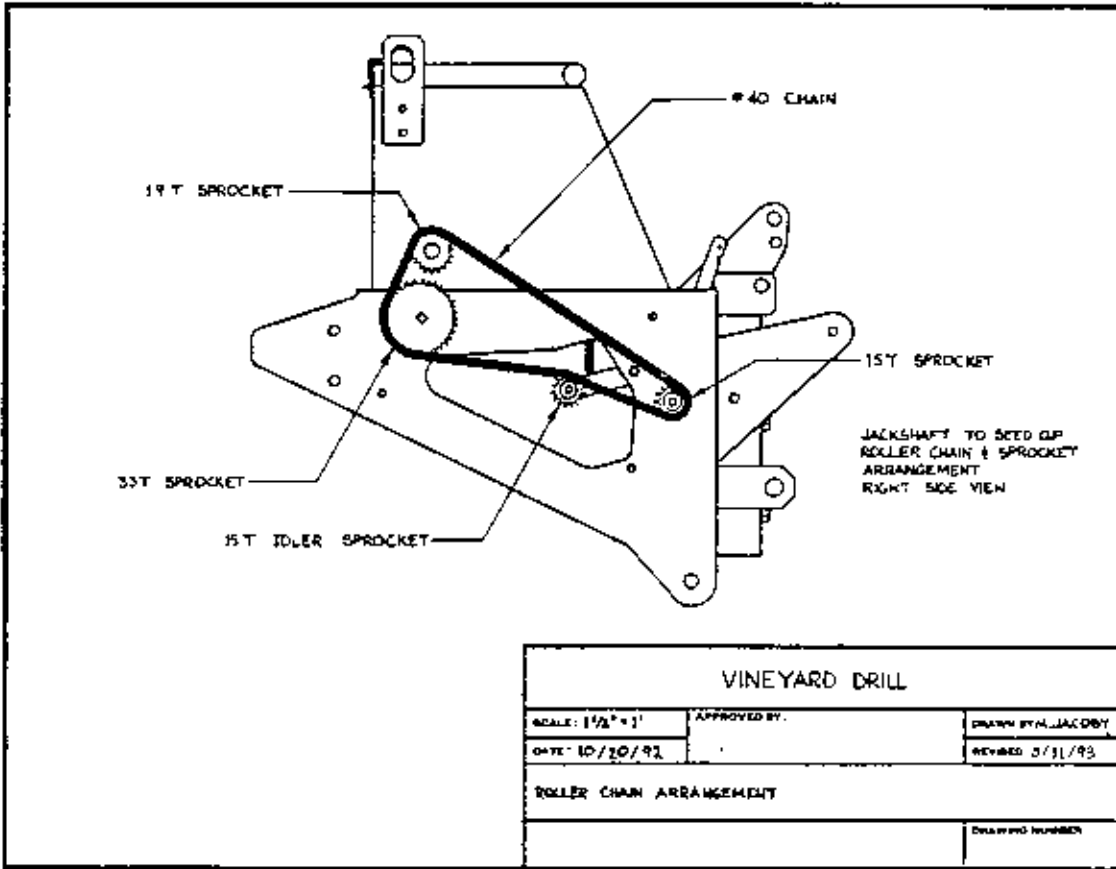
DISK OPENER SPRING PRESSURE SETTING

Each opener spring can be adjusted for down pressure. This is useful when penetrating hard soil and for planting in tractor tire tracks. To adjust the pressure, remove the "W" clip at the bottom of the spring and place it in a higher hole in the spring rod for more pressure and in a lower hole for less pressure (see below). If too much penetration is achieved at the lowest pressure setting the "W" clips may be completely removed.



Minimum Pressure

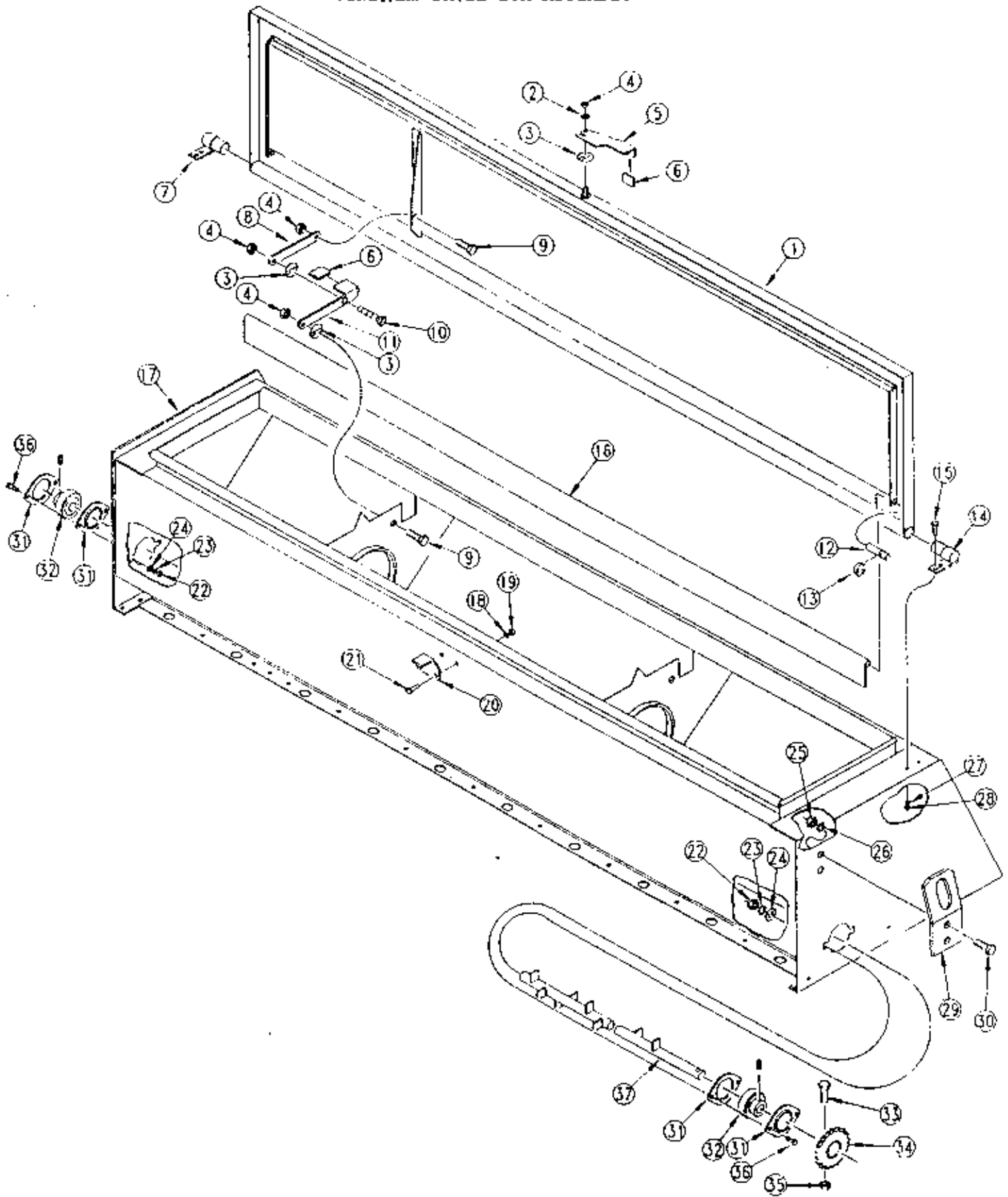
Maximum Pressure



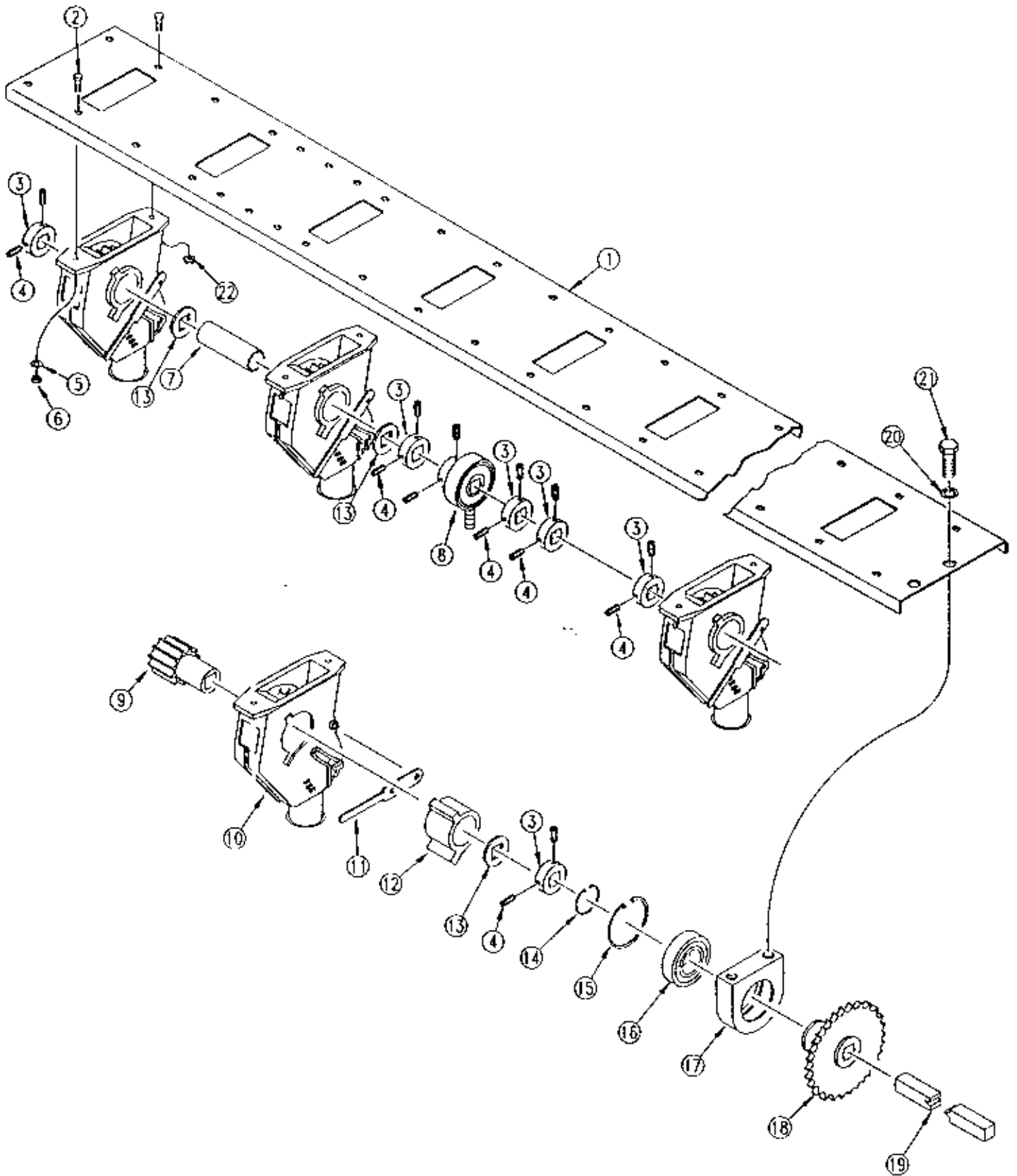
VINEYARD DRILL BOX ASSEMBLY

Ref.	Part No.	Description
1.	308-002H	Overseeder Lid Weldment OS1572
	308-081H	Overseeder Lid Weldment OS1548
2.	804-036C	Washer, Flat 5/16" SAE
3.	804-056C	Washer, Wave Spring 5/16"
4.	803-084C	Nut, Hex Lock Collared 5/16"-18
5.	179-023D	Lid Latch - Handle
6.	817-033C	Lid Latch Grip
7.	179-004H	Lid Hinge Weldment - Left Hand
8.	179-022D	Lid Latch - Upper Arm
9.	802-159C	Bolt, Hex Head 5/16"-18 x 1" Long Gr 5 Plated
10.	801-024C	Screw, Countersunk 5/16"-18 x 82" x 3/4" Long Plated
11.	179-021D	Lid Latch - Lower Latch
12.	179-025D	Seed Diverter Pin
13.	800-048C	Ring, Snap External "E" 5/8" IRR #E-62
14.	179-005H	Lid Hinge Weldment - Right Hand
15.	802-017C	Bolt, Hex Head 3/8"-16 x 1" Long Gr 5 Plated
16.	308-117D	Seed Diverter OS1572
	308-175D	Seed Diverter OS1548
17.	308-164H	Seedbox OS1548
	308-165H	Seedbox OS1572
18.	804-004C	Washer, Internal Star #10 Plated
19.	803-001C	Nut, Hex #10-24 Plated
20.	179-030D	Rear Lid Latch Strike
21.	801-021C	Screw, Round Head #10-24 x 3/4" Long Plated
22.	803-008C	Nut, Hex 5/16"-18 Gr 2 Plated
23.	804-009C	Washer, Lock Spring 5/16" Plated
24.	804-010C	Washer, Flat 5/16" USS Plated
25.	803-020C	Nut, Hex 1/2"-13 Gr 2 Plated
26.	804-015C	Washer, Lock Spring 1/2" Plated
27.	804-013C	Washer, Lock Spring 3/8" Plated
28.	803-014C	Nut, Hex 3/8"-16 Gr 2 Plated
29.	308-193D	Overseeder Sling Bracket
30.	802-258C	Bolt, Hex Head 1/2"-13 x 1" Long Gr 5
31.	822-041C	Flangette 47 MST
32.	822-040C	Bearing 3/4" Bore Fatmir #RA12RRB
33.	802-167C	Bolt, Hex Head 1/4"-20 x 1 1/2" Long Gr 5
34.	202-002H	Sprocket, Speed Change 19T
35.	803-007C	Nut, Lock Dimpled 1/4"-20 Plated
36.	802-007C	Bolt, Hex Head 5/16"-18 x 3/4" Long Gr 5
37.	308-003H	Agitator Weldment OS1572
	308-085H	Agitator Weldment OS1548

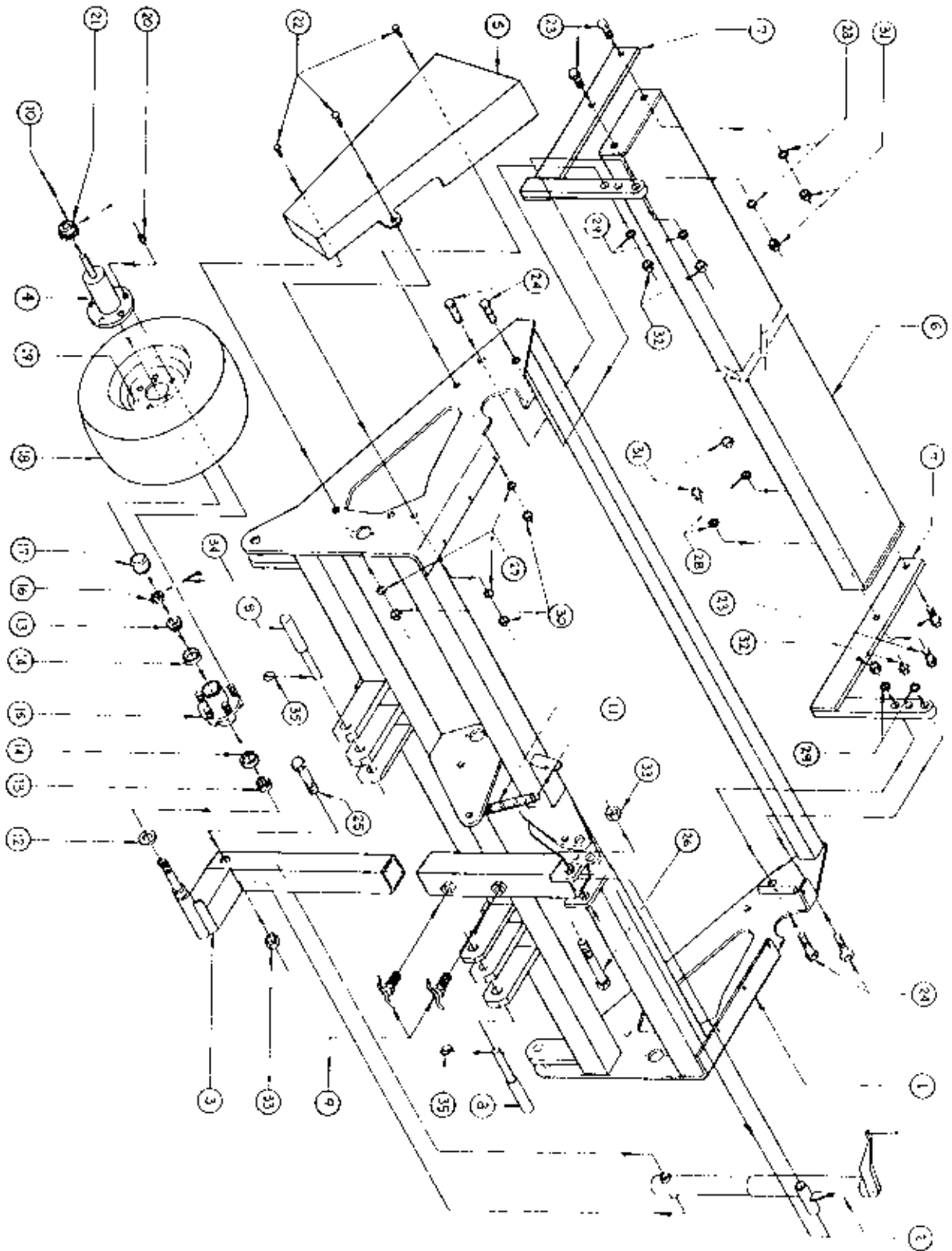
VINEYARD DRILL BOX ASSEMBLY

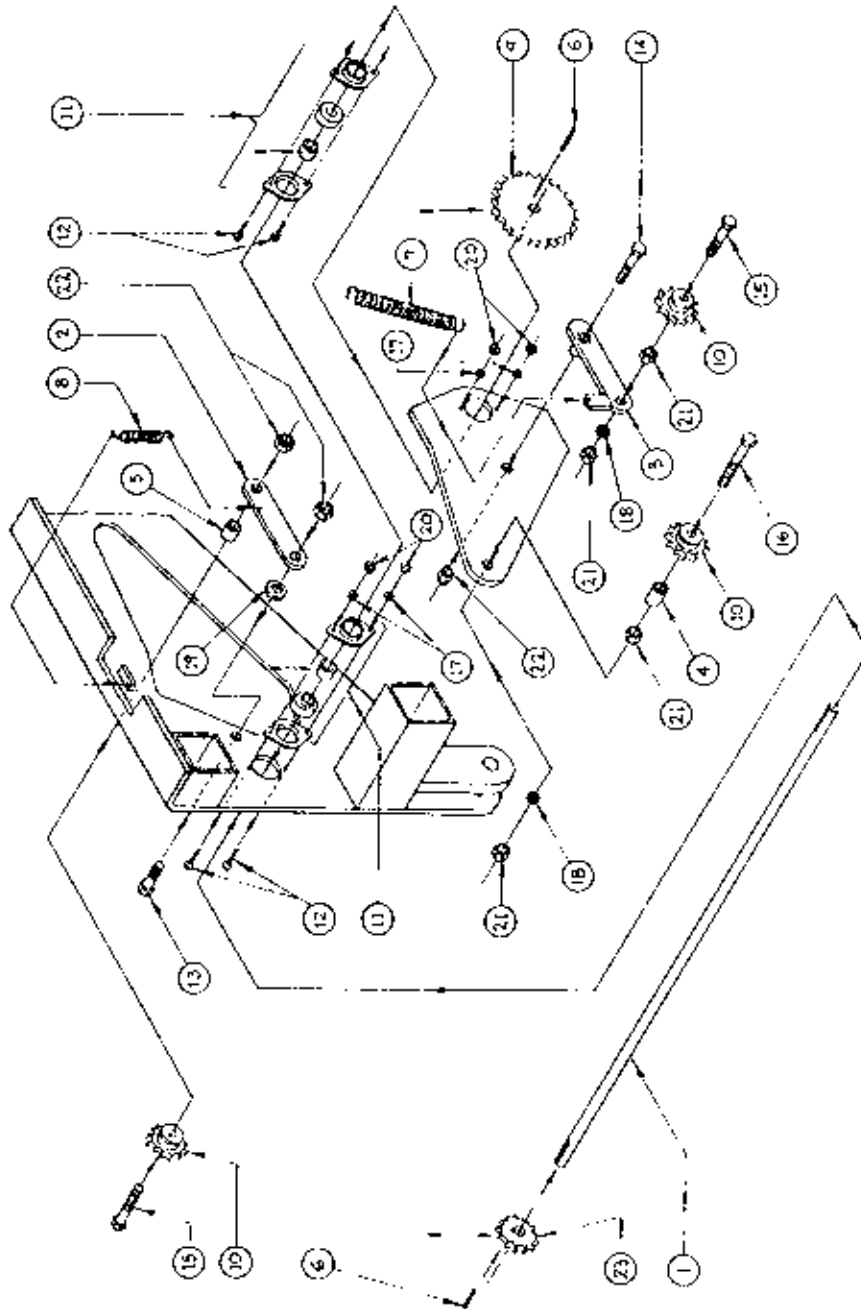


FEEDER CUP ASSEMBLY



MAIN FRAME, WHEEL LEG, CHAIN & WALKBOARD ASSEMBLIES



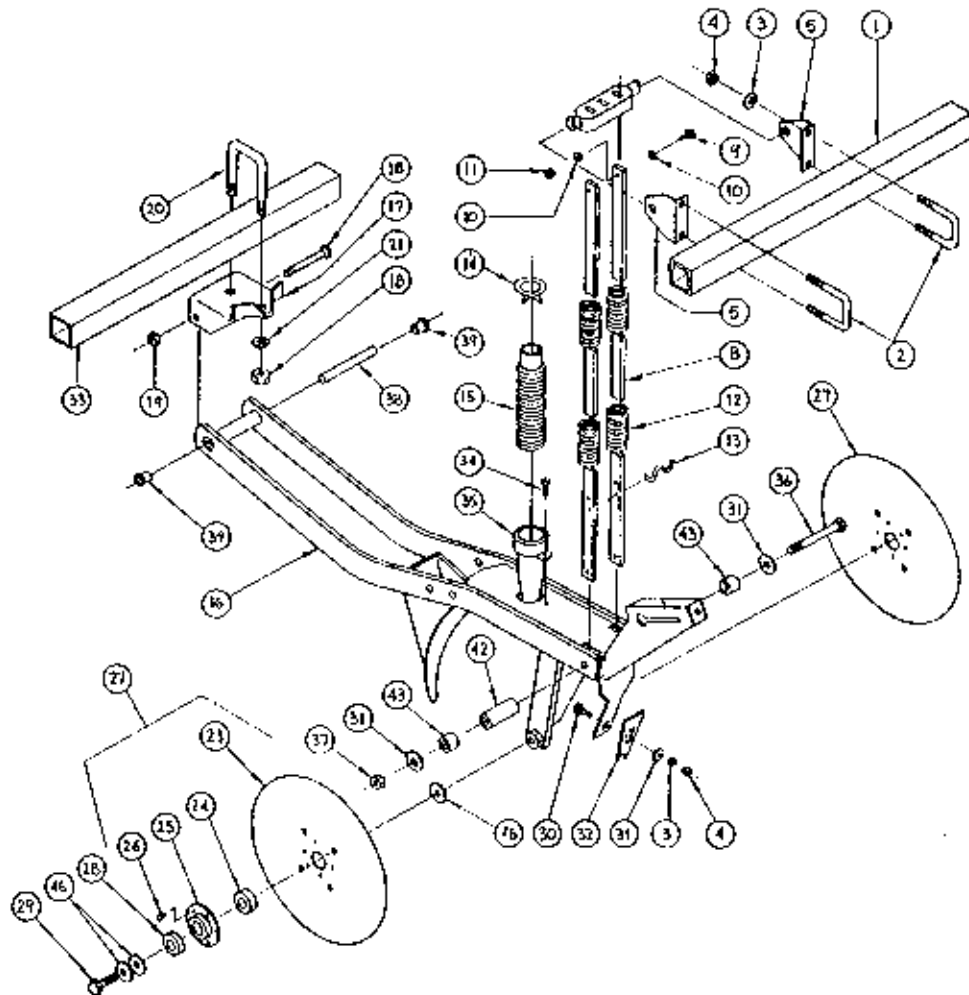
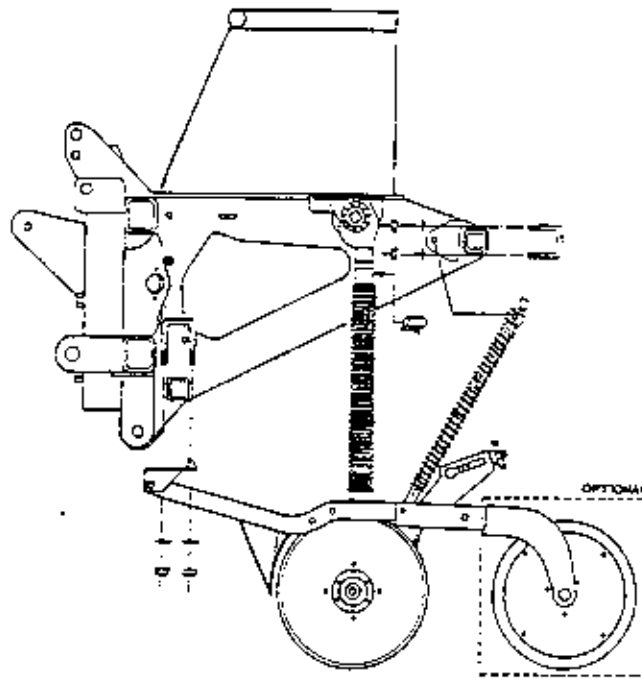


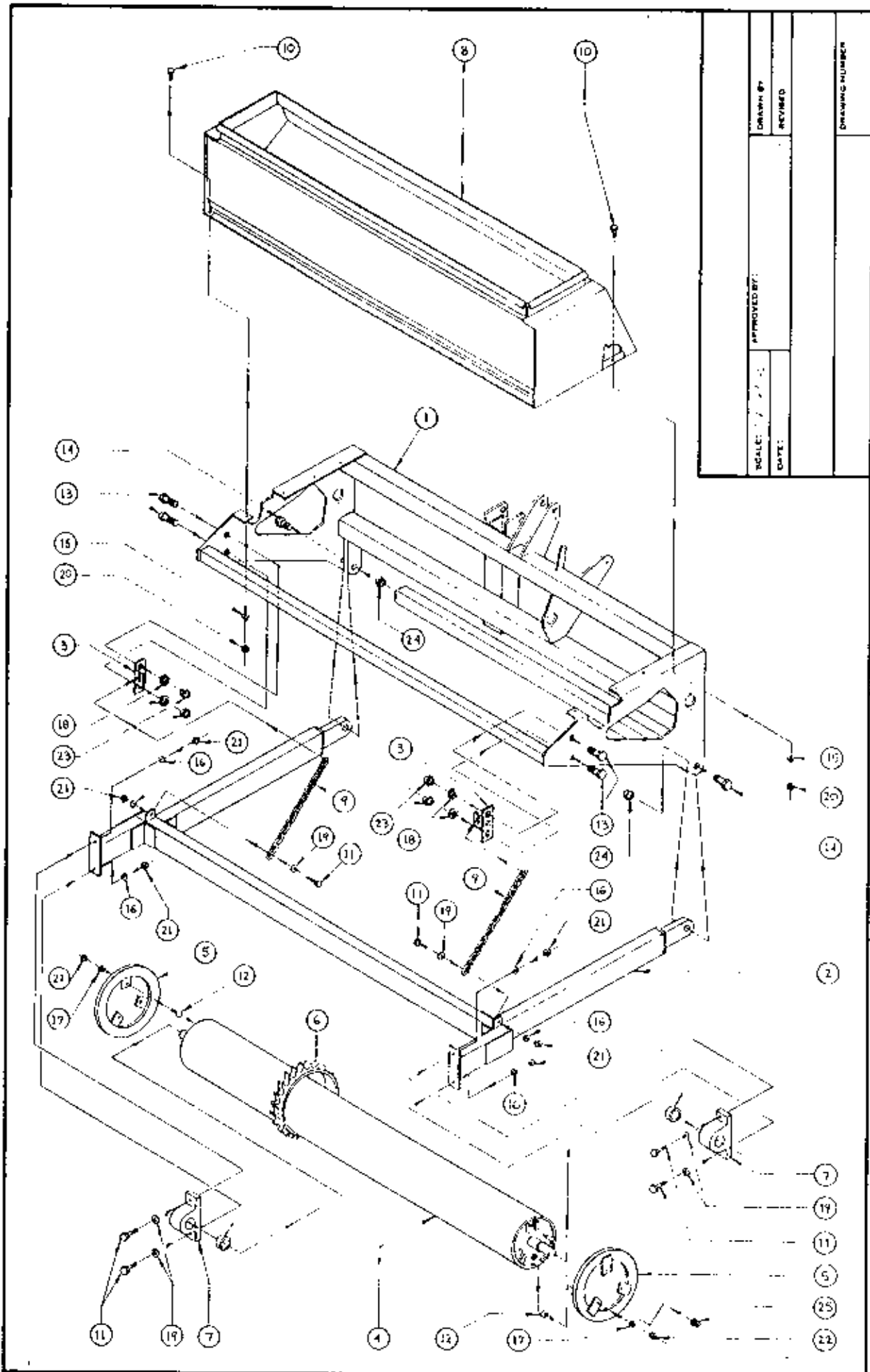
JACK SHAFT, SPROCKET, IDLER & DEARING ASSEMBLIES

SCALE: 1 1/2" = 1' - 0"	APPROVED BY:
DATE: 2/4/93	REVISED

DRAWN BY: JACOBY
DRAWING NUMBER

DOUBLE DISK OPENER ASSEMBLY





APPROVED BY:		DRAWN BY:	
DATE:		REVISED:	
SCALE:		DRAWING NUMBER:	